



CorPatch[®]

Quick Start Guide for CorPatch[®] Trainer

English

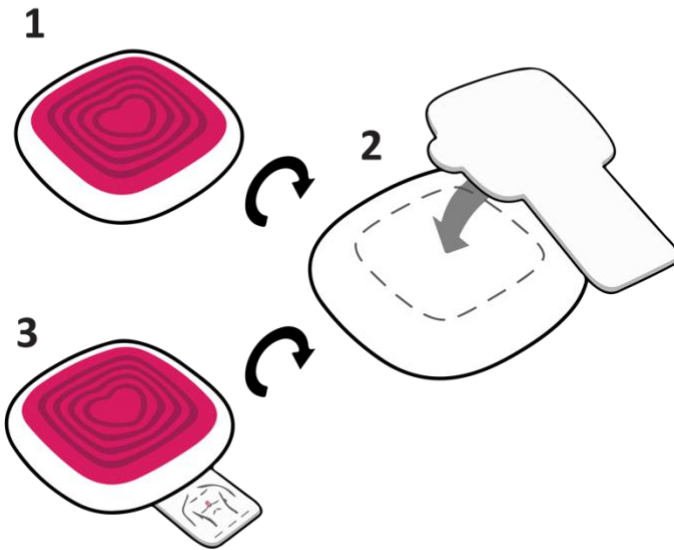
V1.1 2023.08

CorPatch[®] Trainer Version B11

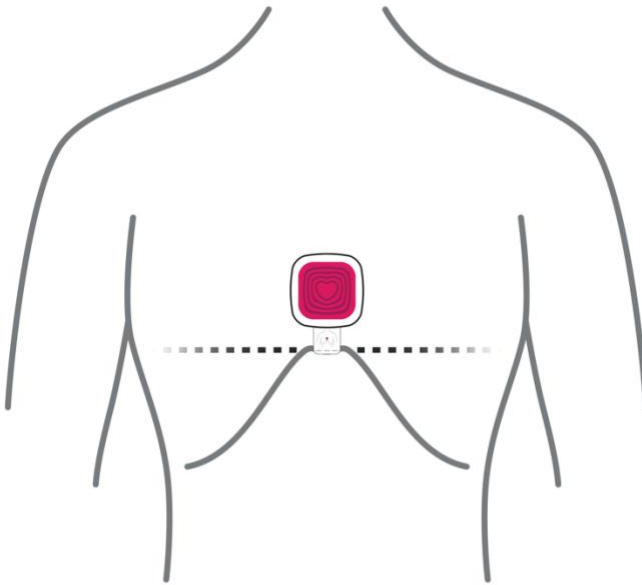
We thank you for joining our vision to save lives and increase survival rates through high-quality Cardiopulmonary Resuscitation (CPR) in case of cardiac arrest.

Setup your CorPatch® Trainer

For setting up your CorPatch® Trainer, mount the Adhesive Patch that comes with your device on the back of your CorPatch® Trainer.



Now you can apply your CorPatch® Trainer to your CPR Training manikin.



Download the CorPatch® Trainer App

Download the free CorPatch® Trainer App to your Tablet. To log in to the app, use the credentials from your invitation email.



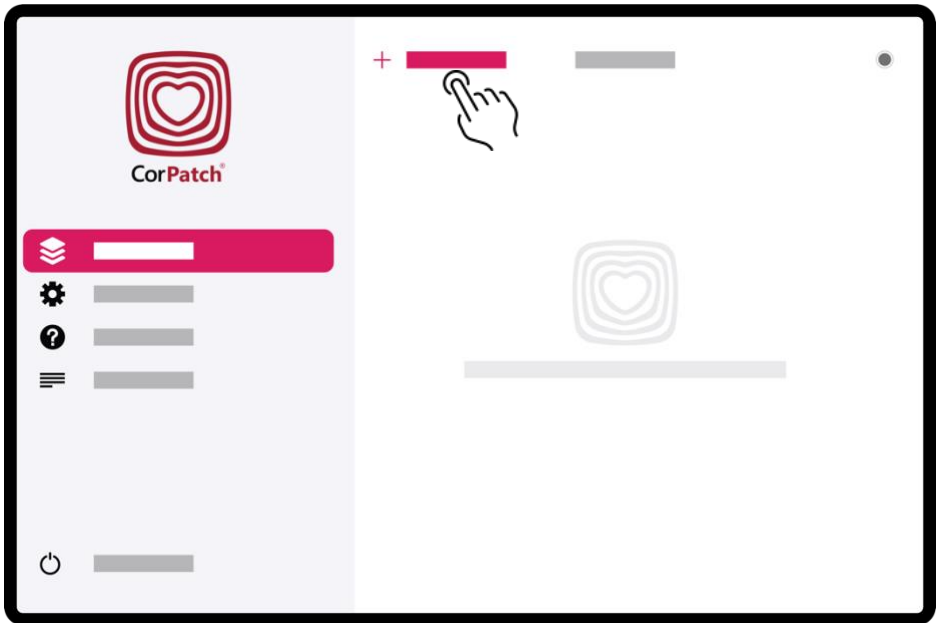
[Google Play Store](#)



[Apple App Store](#)

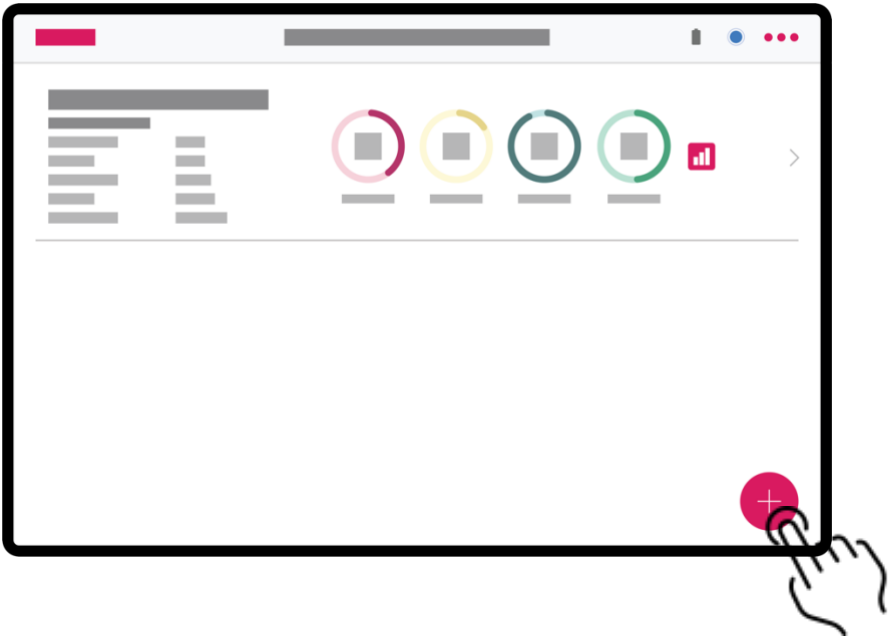
Create a Course

Create a course and add information.



Create a Training

Create a Training with your preferred settings.



Select Trainees

Select the Trainees, that should be part of the training session. You can start a Single or Group Training.



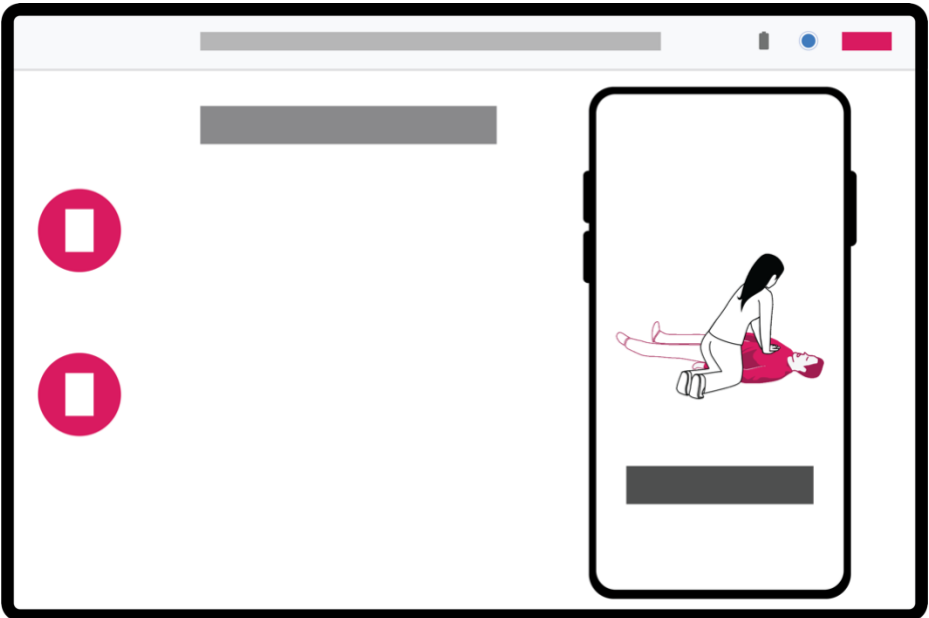
Connect your CorPatch® Trainer

Connect your CorPatch® Trainer when the app prompts you to do so.



Begin CPR training

Choose one of the Trainees (#Number) from the left side of the screen by tapping on them. The CorPatch® Trainer app will advise you on training chest compressions (and rescue breaths).



Results of Training

The **depth** says how many of your compressions were in the range of 5-6 cm.

Frequency says how many of your compressions were within 100-120 compressions per minute. **Recoil** says how many of your compressions had a full recoil. **Flow** indicates the elapsed time you made compressions without any breaks.



Get more information

To get more information about how to use and individualize your CorPatch® Trainer System, please have a look at the Manual. We also prepared a FAQ and First Aid Compendium to help you improve your knowledge about Cardiac Arrest and First Aid.





Please be sure to read and follow the warnings regarding medical emergency situations identified in the Manual.